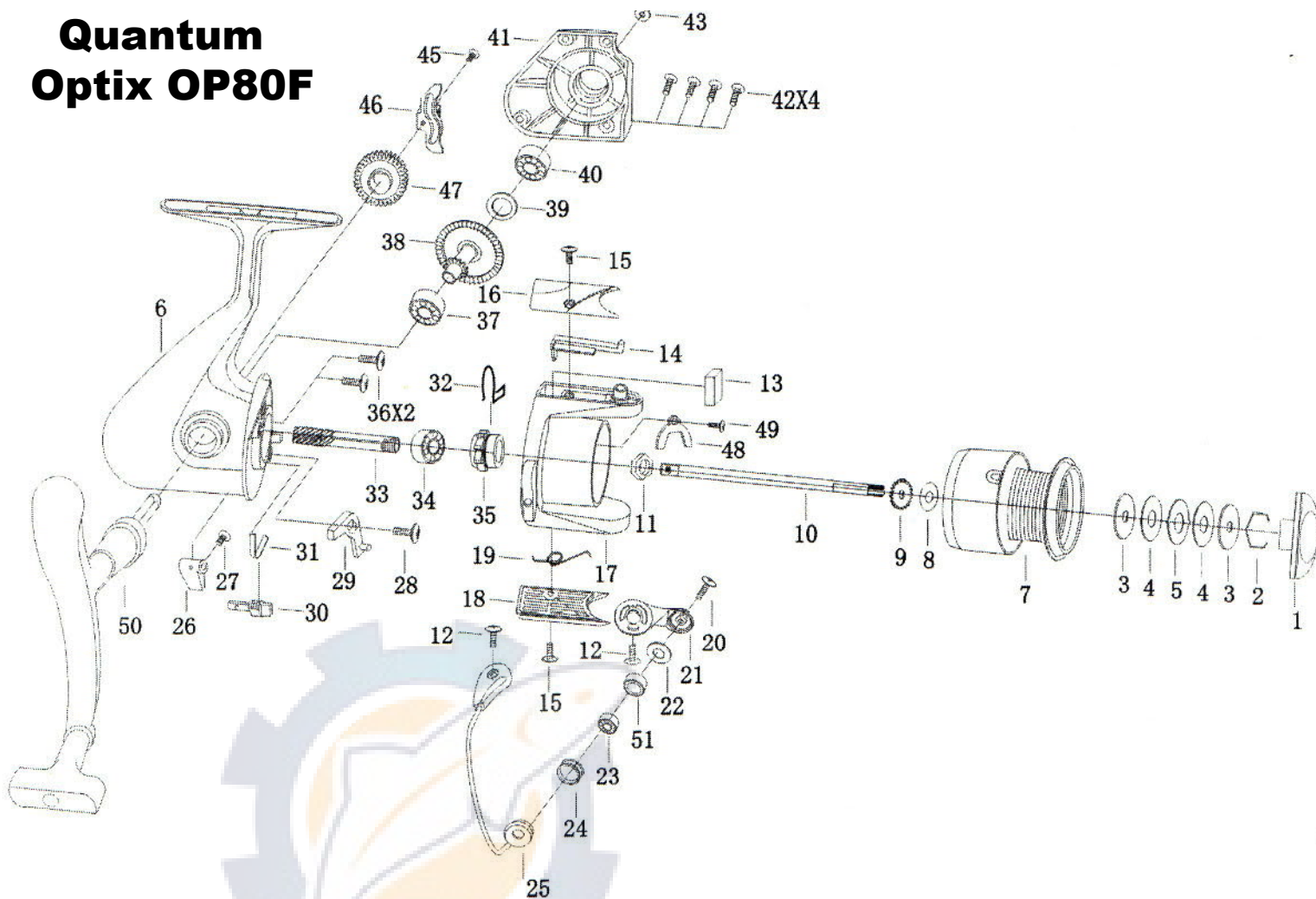


Quantum Optix OP80F



KEY # DESCRIPTION

- 1 DRAG KNOB
- 2 DRAG WASHER RETAINER
- 3 KEY WASHER
- 4 DRAG WASHER
- 5 EARED WASHER
- 6 BODY
- 7 SPOOL ASSY.

- 8 SPOOL WASHER
- 9 CLIP GEAR
- 10 MAIN SHAFT
- 11 ROTOR NUT
- 12 SCREW
- 13 BALANCE WEIGHT
- 14 KICK LEVEL
- 15 SCREW
- 16 BAIL HOLDER COVER
- 17 ROTOR
- 18 BAIL ARM COVER
- 19 BAIL ARM SPRING
- 20 LINE ROLLER SCREW
- 21 BAIL ARM
- 22 LINE ROLLER WASHER
- 23 BALL BEARING
- 24 LINE ROLLER
- 25 BAIL ASSY.

KEY # DESCRIPTION

- 26 ANTI-REVERSE BUTTON
- 27 SCREW
- 28 SCREW
- 29 ANTI-REVERSE PAWL
- 30 ANTI-REVERSE BAR
- 31 ANTI-REVERSE BAR SPRING
- 32 SILENT SPRING
- 33 PINION GEAR
- 34 BALL BEARING
- 35 ANTI-REVERSE RATCHET
- 36 SCREW
- 37 BALL BEARING
- 38 DRIVER GEAR
- 39 WASHER
- 40 BALL BEARING
- 41 SIDE PLATE ASSY.
- 42 SIDE PLATE SCREW
- 43 WASHER
- 44 HANDLE SCREW CAP
- 45 OSCILLATION SCREW
- 46 OSCILLATION SLIDER
- 47 OSCILLATION GEAR
- 48 LOCKING SLICE
- 49 SCREW
- 50 HANDLE ASSY.
- 51 LINE ROLLER BUSHING